



# NEXLER SBS BR

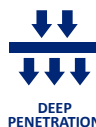
## Asphalt-resin solution

### TECHNICAL DATA

Ingredients	mixture of asphalts, solvents and performance additives
Drying time	no longer than 6 h
Flow time at temperature (23 ± 0,5) °C, cup no. 4	30 - 150 s
Pensky-Martens flash point	no less than 31 - 40°C
Water content	no more than 0,5% (m/m)
Viscosity (flow time, Ø4 mm ISO cup)	(80 ± 8) s
Consumption: - when priming mineral wool	approx. 0,3 l/m <sup>2</sup> 0,9 - 1,2 l/m <sup>2</sup>
Substrate and ambient temperature during application	from + 5°C to +30°C
Reference document(s)	PN-B-24620:1998; PN-B-24620:1998/Az:2004; IBDiM-KOT-2019/0277 issue 3 IBDiM-KOT-2022/0815 issue 1

### PROPERTIES

- Has excellent penetration properties into insulated surfaces
- Increases the adhesion of substrates
- Has very good adhesion to the substrate
- Resistant to aggressive substances contained in the soil
- Quick and easy to use
- Protects concrete against moisture and corrosion



### APPLICATION

- Priming substrate for solvent coating waterproofing and weldable roofing felt
- Making anti-corrosion coatings also for metal elements
- Maintenance of corroded concrete surfaces
- Priming of mineral wool for weldable and self-adhesive felt



### PACKAGING

#### Poland

- Plastic buckets: 5 l, 10 l, 20 l
- Quantity per pallet:
  - 5 l - 140 pcs.
  - 10 l - 60 pcs.
  - 20 l - 33 pcs.

## METHOD OF APPLICATION

### ▪ CONDITIONS OF USE

The product is intended for outdoor use.

The product should be used in airy places, away from fire. The temperature of the substrate and air during the works should be from +5°C to +30°C. It is allowed to use the product at negative temperatures, provided that the substrate was dry.

Works should not be carried out during precipitation and strong sunlight.

### ▪ SUBSTRATE PREPARATION

The substrates on which it can be used are: concrete, bricks, sheets, felt, other bituminous substrates.

The substrate intended for priming must be bound, dry, seasoned, load-bearing. The substrates should be cleaned mechanically, dust, any loose layers, sharp protruding edges and impurities that worsen adhesion should be removed. If there are cavities in the substrate, honeycombing, gravel pockets and other unevenness, the substrate should be levelled and repaired, the cavities should be filled.

Partitions made of small size elements should have an equal face, a full joint. If this condition is not met, a levelling plaster should be made. The substrate on which the product will be used must be continuous.

Clean the existing bituminous substrates from loose impurities and peeling coatings.

Ruptures and cavities in the felt should be levelled or sealed with a roofing putty. Areas of leakage should be sealed, for example by welding felt patch. Blisters on the felt should be cut and glued using a roofing putty.

When working at negative temperatures, the substrate must be cleaned of ice and frost.

### ▪ PRODUCT CONTROL

Check the production date on the label before use. The product should not be incorporated beyond its shelf life. The product should not be objectionable (e.g. contain lumps, fibres, discolouration) after opening. After mixing, the compound should be homogeneous and free of lumps and clumps resulting from under-mixing. Do not use a product that bears signs of frostbite. The correct consistency of the product is not dry or rubbery. When properly mixed, the product forms a homogeneous coating when spread over the surface with a tool.

### ▪ PRODUCT PREPARATION

Stir thoroughly before use, and repeat mixing from time to time during application. If stored at low temperatures, the product should be placed in a warm room for a minimum of 24 hours before use.

### ▪ APPLICATION METHOD

The prepared compound is applied to the primed surfaces with a roofing brush or a paint brush. The layer should not be too thick. During binding, the freshly applied layer should be protected against: precipitation and strong sunlight.

### ▪ CONTROL OF PERFORMANCE

When fresh, check the consumption of the material per unit and/or dedicated area on an ongoing basis.

A properly primed surface, after the solution has dried, should have a uniform colour, without streaks and discoloration. The resulting coating should be free of flakes and damage.

## TOOLS AND TOOL CLEANING

Roofing brush, paint brush.

Wash tools in organic solvents. If the product dries, leave it in the solvent until the dirt dissolves.

## STORAGE AND TRANSPORT

The shelf life of the product is 12 months from production date specified on the packaging. Store in dry and cool rooms, in tightly sealed original packaging. Do not allow long exposure to high temperatures or sunlight during storage and transport. The product is not sensitive to negative temperatures.

## NOTES

Works should be carried out in accordance with technical conditions, manufacturer's instructions, health and safety standards and regulations. For information on how to deal with symptoms of disease, allergies or irritation of the skin or eyes, please refer to the Safety Data Sheet ([www.nexler.com](http://www.nexler.com)).

After work the remaining content of the product and container should be handed over to authorized companies.

## GENERAL RECOMMENDATIONS

Technical data and information on the method of use are given for a temperature of 23°C ± 2°C and a relative air humidity of 55%. In other conditions, the setting (drying) time may change significantly. The consumption of the product given in this sheet depends on the preparation of the substrate.

Do not use the product in combination with polystyrene foam and for tar materials.

## SAFETY INFORMATION

Flammable liquid and vapour. Causes skin irritation. Causes serious eye irritation. May cause respiratory irritation. May cause damage to organs through prolonged or repeated exposure. If medical advice is needed, have product container or label at hand. Keep out of reach of children. Keep away from heat, hot surfaces, sparks, open flames and other ignition sources. No smoking. Use only outdoors or in a well-ventilated area. Wear protective gloves/protective clothing/eye protection/face protection. Store locked up. Dispose of contents/container according to the instructions of the manufacturer or person authorized to dispose of waste.

## IMPORTANT INFORMATION

Please refer to the detailed conditions of use of the product before use.  
We guarantee the quality of our materials as part of our terms of sale and delivery.

For buildings with special requirements that are not covered by this manual, we provide our Customers with our own professional advisory service.

The manufacturer has no influence on the improper use of the material, its use for other purposes or under conditions other than those described above. The guarantee only covers the quality of the delivered product. The correct and therefore effective use of the product is not subject to our control.

Neither the manufacturer nor his authorized representative may be held liable for any loss incurred as a result of improper use or storage of the product.

Employees of the company are authorized to provide technical information only and solely in accordance with this technical data sheet. Information other than that contained in this sheet should be confirmed in writing.

If you have any doubts, consult the manufacturer.

Once we have issued a new technical data sheet, this manual is no longer valid.

## CONTACT DETAILS

NEXLER sp. z o.o.

Łużycka 6, 81-537 Gdynia, Poland

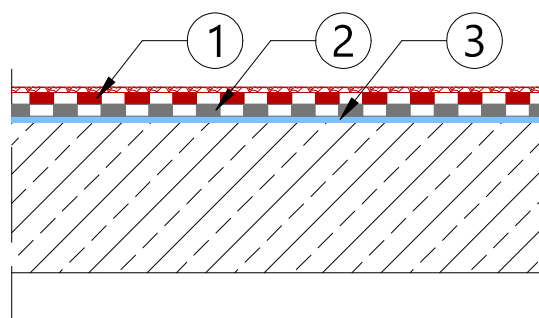
tel.: +48 58 712 94 44

www.nexler.com

e-mail: dt@nexler.com

## DETAILS

Detail - full roof waterproofing.



1. Heat - welded roofing membranes of top application
2. Heat welded underlay membranes
3. Priming layer of **NEXLER SBS BR**