



# Electric Action Polisher

## P2042

# Instruction Manual



**Warning:** Please make certain that the person intended to use this equipment carefully reads and understands these instructions before starting operations.


## SAFETY INFORMATION


please read, understand, and follow all safety information contained in these instructions prior to the use of this device. Retain these instructions for future reference.

### Intended Use:

This Electric Dual Action Polisher is intended for use as a paint polisher for automotive, marine & RV vehicles. Use in any other application has not been evaluated may lead to an unsafe condition. This machine is NOT intended for sanding or grinding.

## Explanation of Signal Word Consequences

 **WARNING:** indicates a potentially hazardous situation, which, if not avoided, could result in death or serious injury and/or property damage.

 **CAUTION:** indicates a potentially hazardous situation, which, if not avoided, may result in minor or moderate injury and/or property damage.

**NOTICE:** indicates a potentially hazardous situation, which, if not avoided, may result in property damage.

## Summary of device labels containing safety information



**WARNING:** To reduce the risk of injury, user must read instruction manual

Symbol indicates "Class II" construction



**WARNING:** Hazardous Voltage



Please recycle, Do not dispose in household waste

Read the Material Safety Data Sheets (MSDS) before using any materials



Contact the suppliers of the workpiece materials and abrasive materials for copies of the MSDS if one is not available

Exposure to DUST generated from workplace and/or abrasive materials can result in lung damage and/or other physical injury.

Use dust capture or local exhaust as stated in the MSDS. Wear government-approved respiratory protection and eye and skin protection. Failure to follow this warning can result in serious lung damage and/or physical injury.



## **GENERAL POWER TOOL SAFETY WARNINGS**

To reduce all risks associated with the use of this product, including those related to hazardous dusts, electric shock, fire, and other hazards.

-Read all safety warnings and instructions.

-Save all warnings and instructions for future reference.

Note: the term "power tool" in these warnings refers to your manually operated (corded) power tool.

### **1) To reduce the risks related to work area safety, including those associated with electrical shock, fire, and explosion, in use of this product:**

- 1.1 Keep work area clean and well lit. Cluttered or dark areas invite accidents.
- 1.2 Do not operate this power tool in explosive atmospheres, such as in the presence of flammable liquids, gases or dust. Power tools create sparks which may ignite the dust or fumes.
- 1.3 Keep children and bystanders away while operating a power tool. Distractions can cause you to lose control.

### **2) To reduce the risks related to Electrical Safety in use of this product's battery charger.**

- 2.1 Power tool plugs must match the outlet. Never modify the plug in any way. Do not use any adapter plugs with earthed (grounded) power tool chargers. Unmodified plugs and matching outlets will reduce risk of electric shock.
- 2.2 Avoid body contact with earthed or grounded surfaces such as pipes, radiators, ranges and refrigerators. There is an increased risk of electric shock if your body is earthed or grounded.
- 2.3 Do not expose power tool to rain or wet conditions. Water entering a power tool will increase the risk of electric shock.
- 2.4 Do not abuse the cord. Never use the cord for carrying, pulling or unplugging the power tool. Keep cord away from heat, oil, sharp edges or moving parts. Damaged or entangled cords increase the risk of electric shock.
- 2.5 When operating the power tool outdoors, use an extension cord suitable for outdoor use. Use of a cord suitable for outdoor use reduces the risk of electric shock. If an extension cord is to be used outdoors, it must be marked with the suffix W-A or W following the cord type designation. Use of a cord suitable for outdoor use reduces the risk of electric shock. When using an extension cord, be sure one heavy enough to carry the current your product will draw. An undersized cord will cause a drop in line voltage resulting in loss of power and overheating.
- 2.6 If operating a power tool in a damp location is unavoidable, use a supply which is protected by a ground fault circuit interrupter (GFCI). Use of GFCI reduces the risk of electric shock.
- 2.7 Do not attempt to modify the power tool, or use it if it has been damaged or subject to abuse. A damaged power tool increases the risk of fire or electric shock.

### **3) To reduce the risks related to personal safety, including those associated with ejected part flings, hazardous dusts, skin cuts/abrasion, and entanglement in the use of this product:**

- 3.1 Stay alert, watch what you are doing and use common sense when operating a power tool. Do not use a power tool while you are tired or under the influence of drugs, alcohol or medication. A moment of inattention while operating power Tools may result in serious personal injury.
  - 3.2 Use personal protective equipment . Always wear eye Protection. Protective equipment such as dust mask ,non-skid safety shoes ,hard hat ,or hearing protection used for appropriate condition will reduce personal injuries .
    - . Additionally ,always wear a properly fitted N100 or equivalent respirator at all times while working on lead-based paint :
    - Always use appropriate respiratory ,skin protection ,and /or local exhaust as stated in the MSDS of the material being worked on.
  - 3.3 Prevent unintentional starting ,Ensure the switch is in the off-position before connecting to power source ,picking up ,or carrying the tool, carrying power tools with your finger on the switch or energizing power tools that have the switch on invites accidents .
  - 3.4 Remove any adjusting key or wrench before turning the power tool on ,A wrench or a key left attached to a rotating part of the power tool may result in personal injury .
  - 3.5 Do not over reach ,Keep proper footing and balance at all times ,This enables better control of the power tool in unexpected situations .
  - 3.6 Dress properly ,Do not wear loose clothing or jewelry ,Keep your hair, clothing and gloves away from moving parts .loose cloths ,jewelry or long hair can be caught in moving parts .
  - 3.7 if device are provided for the connection of dust extraction and collection facilities ,ensure these are connected and properly used ,use of dust collection can reduce dust-related hazards .
- 4) To reduce the risks related to power tool use and care ,including those associated with noise ,vibration ,ejected part flyings ,and skin cuts abrasion in the use of this product:**
- 4.1 Do not force the power tool,Use the correct power tool for your application, The correct power tool will do the job better and safer at the rate for which it was designed .
  - 4.2 Do not use the power tool if the switch does not turn it in and off .Any power tool that cannot be controlled with the switch is dangerous and must be repaired .
  - 4.3 Disconnect the plug from the power source before making any adjustments,changing accessories ,or storing power tools ,Such preventive safety measures reduce the risk of starting the power tool accidentally .
  - 4.4 Store idle power tool out of the reach of children and do not allow persons unfamiliar with the power tool or these instructions to operate the power Tool. Power tools are dangerous in the hands of untrained users .
    - Additionally ,never use this tool system in a home environment ,where young children are present without responsible adult supervision.
  - 4.5 Maintain power tool ,Check for misalignment or binding of moving parts,

breakage of parts and any other condition that may affect the power tool's operation .if damaged ,have the power tool repaired before use ,Many accidents are caused by poorly maintained power tools.

- 4.6 Replace abrasive product regularly .Worn abrasives are likely to bind and are more difficult to control :providing a non-uniform job.
  - 4.7 Use the power tool ,accessories and abrasives product,in accordance with these instructions ,taking into account the working conditions and the work to be performed .Use of the power tool for operation s different from those intended could result in a hazardous situation .
  - 4.8 Do not operate this tool for long periods of time .Vibration caused by the operating the action of this tool may cause permanent injury to fingers,hands ,and arms ,Use gloves to provide extra cushion ,take frequent rest periods ,and limit daily time of use .
  - 4.9 Hold power tools by insulated gripping surfaces when performing an operation where the tool may contact hidden wiring or its own cord ,Contact with a live wire will make exposed metal parts of the tool live and shock the operator.
  - 4.10 Accessories must be rated for at least the speed recommended on the tool warning label .Wheels and other accessories running over rated speed can fly apart and cause injury .
  - 4.11 Always disconnected the polisher cord plug from the power circuit before changing pads .Such preventive safety measures reduce the risk of Starting the power tool accidentally .
  - 4.12 Always maintain a firm grip on the polisher handles with both hands to prevent loss of control .
  - 4.13 Do not operate the polisher without all guards and covers securely in place .
- 5) To reduce the all above stated risks related to servicing this power tool :**
- 5.1 Have your power tool serviced by a qualified repair person using only identical replacement .
  - 5.2 Electrical repairs should only be attempted by trained repairmen.



## **ADDITIONAL SAFETY WARNINGS FOR POLISHING OPERATIONS**

- 1 This power tool is intended to function as a polisher .Read all safety warnings ,instructions ,illustrations and specifications provided with this power tool.Failure to follow all instructions listed below may result in electric shock, fire and /or serious injury .
- 2 Operations such as grinding ,sanding ,wire brushing ,or cutting -off are not recommended to be performed with this power tool .Operations for which the power tool was not designed may create a hazard and cause personal injury .
- 3 Do not use accessories which which are not specifically designed and recommended by Woliki's. Just because the accessory can be attached to your power tool ,it does not assure safe operation .
- 4 The outside diameter and the thickness of your accessory must be within the capacity rating of your power tool .Incorrectly sized accessories cannot be

adequately guarded or controlled .

- 5 The arbour size of wheels ,flanges ,backing pads or any other accessory must properly fit the spindle of the power tool. Accessories with arbour holes that do not match the mounting hardware of the power tool will run out of balance ,vibrate excessively and may cause loss of control .
- 6 Do not use a damaged accessory ..Before each use inspect the accessories such as abrasive wheels for chips and crafts ,backing pad for cracks, tear or excess wear, wire brush for loose or cracked wires .if power tool or accessory is dropped, inspect for damage or install an undamaged accessory, After inspecting and installing an accessory and run the power tool at maximum no-load speed for one minute, Damaged accessories will normally break apart during this test time .
- 7 Wear personal protective equipment ,Depending on application ,use face shield ,safety goggles or safety glasses ,As appropriate,wear dust mask, hearing protectors ,gloves and workshop apron capable of stopping small abrasive or workpiece fragments ,The eye protection must be capable of stopping flying debris generated by various operations ,The dust mask or respirator must be capable of filtrating particles generated by your operation, Prolonged exposure to high intensity noise may cause hearing loss .  
■Always wear proper personal hearing protection that conforms to ANSI S12.6(S3.19)during use ,Under some conditions and duration of use ,noise from this product may contribute to hearing loss .
- 8 Keep bystanders a safe distance away from work area ,Anyone entering the work area must wear personal protective equipment .Fragments of workpiece or of a broken accessory may fly away and cause injury beyond immediate area of operation .
- 9 Hold power tool by insulated gripping surface only ,when performing an operation where the cutting accessory may contact hidden wiring or its own cord .Cutting accessory contacting a “live” wire may make exposed metal parts of the power tool “live”and shock the operator ,Note :the above warning may be omitted if polishing is the only recommended operation .
- 10 Position the cord clear of the spinning accessory .if you lose control ,the cord may be cut or snagged and your hand or arm may be pulled into the spinning accessory ,
- 11 Never lay the power tool down until the accessories has come to a complete stop ,the spinning accessory may grab the surface and pull the power tool out of your contro ,
- 12 do not run the power tool while carrying it at your side .Accidental contact with the spinning accessory could snag your clothing ,pulling the accessory into your body .
- 13 Regularly clean the power tool’s air vents .The motor’s air vents .The motor’s fan will draw the dust inside the housing and excessive accumulation of powdered metal may cause electrical hazards.
- 14 Do not operate the power tool near flammable materials. Sparks could ignite these materials
- 15 Do not use accessories that require liquid coolants .Using water or other liquid coolants may result in electrocution or shock.

## **WARNING:**

**Some dust created by power sanding, sawing, grinding, drilling and other construction activities contains chemicals known to cause cancer, birth defects, or other reproductive harm,**

Some examples of these chemicals are:

- Lead from lead-based paint
- Crystalline silica from bricks and cement and other masonry products
- Arsenic and chromium from chemically treated lumber (CCA)

Risks from these exposures vary, depending on how often you do this type of work. To reduce exposure to these chemicals: work in a well-ventilated area with approved safety equipment (such as dust masks that are specially designed to filter out microscopic particles). The Dual Action polisher should not be used for sanding, sawing, grinding, drilling, or other construction activities beyond polishing of painted surface.

## **CAUTION:**

### ■ **To reduce the risk associated with environmental contamination :**

- Do not throw electric power tools into the household waste! In accordance with the European Directive 2002/96/EG on Waste Electrical and Electronic Equipment and transposition into national law, used electric power tools must be collected separately and recycled in an environmentally friendly manner.
- Separate collection of used products and packaging allows materials help prevent environmental pollution and reduces the demand for raw materials.
- Dispose of all the process dust in accordance with all applicable regulations.

### ■ **To reduce the risks associated with risk skin abrasion :**

- Do not touch the rotating parts of the tool during use for any reason without taking appropriate protective measures.

## **NOTICE:**

### ■ **To reduce the risk associated with serious damage to the power tool:**

- . Do not operate this tool on a current where the voltage is not within correct limits.
- Do not operate tools rated A.C. on D.C. current.

## ADDITIONAL SPECIFIC SAFETY RULES

- **Hold power tools by insulated gripping surfaces whenever performing an operation where the tool may contact hidden wiring or its own cord .** Contact with a “live” wire will make exposed metal parts of the tool “live” and may result in electric shock to the operator .
  - **Accessories must be rated for at least the speed recommended on the tool warning label .** Wheels and other accessories running over rated speed can fly apart and cause injury .
  - **Always disconnect the polisher cord plug from the power circuit before changing pads .**Such preventive safety measures reduce the risk of starting the power tool accidentally .
  - **Always maintain a firm grip on the polisher handles with both hands to prevent loss of control .**
  - **Do not operate the polisher without all guards and covers securely in place .**
  - **Do not operate this tool for long periods of time .**Vibration caused by the operating action of this tool may cause permanent injury to fingers ,hand and arms ,Use gloves to provide extra cushion ,take frequent rest periods ,and limit daily time of use.  
 Always wear proper personal hearing protection that conforms to ANSI S12.6(S3.19) during use ,Under some conditions and duration of use ,noise from this product may contribute to hearing loss.  
 Use of this tool can generate and /or disburse dust ,which may cause serious and permanent respiratory or other injury ,Always use NIOSH/OSHA Approved respiratory protection appropriate for the dust exposure .Direct particles away from face and body .
- MOTOR:**Do not operate this tool where the voltage is not within correct limits. Do not operate tools rated A.C.on To do so may seriously damage the tool

<b>Electrical Specifications</b>		
Model		P2042
Voltage		230V
Frequency		50Hz
OPM		1800-6800
Power		560W
Weight		2400grams
Noise Level dBA Pressure		84

# OPERATING INSTRUCTIONS

## TO START AND STOP POLISHER

- 1 **CAUTION** :Make certain the switch is in the " OFF " position ,and the Power source is the same as specified on the tools nameplate .
- 2 Connect the tool to the power sources .
- 3 Slide the switch button(A),Fig .1,forward to start the motor ,Slide the switch button rearward to stop motor .

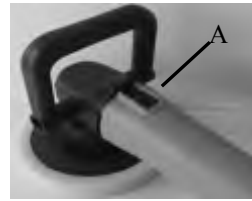


Fig.1

## VARIABLE SPEED

Speed is adjusted by turning thumbwheel (A), Fig.2.Thumbwheel position#1 provides the slowest operating speed and position #6 the fastest .Speed may be changed while motor is running or while it is stopped (polisher works best on settings between positon 3-5).

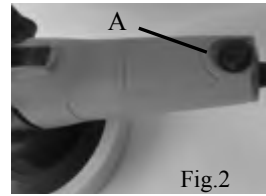


Fig.2

## HANDLE

A hand (A)Fig,3 is furnished with the polisher, Slide handle around tooth and groove area of the body and insert two screws (provided ) to secure the handle .

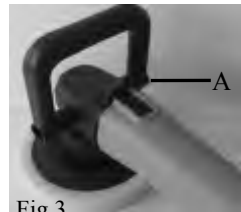


Fig.3

## CHANGING THE BACKING PLATE

- 1 **⚠WARNING** :DISCONNECT POLISHER FROMPOWER SOURCE .
- 2 Position spindle wrench(A)Fig4.(furnished with polisher )to engage the flats on the spindle (B)Fig.4

### Notes:

- A.It may be necessary to rotate the backing Plate(by hand) to expose the spindle flats.
- B.Photo shows polisher with backing plate removed for clarity .
- 3 While holding the spindle with the wrench , rotate the backing plate counterclockwise (by hand ) to remove .
- 4 To install backing plate ,reverse the above procedure .

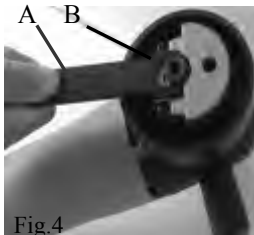


Fig.4

## USING THE POLISHER

**DIRECTIONS :**Wash and dry your car completely .Pull vehicle into covered area,Evaluate the surface to determine which products ar necessary ,Choose the correct product .Apply product to pad ,place machine on surface ,turn machine on and begin applying product .(Do not turn machine on until it is on the surface!) work product evenly and thoroughly into surface .Re-apply product sparingly to pad as needed ,Remove product with a clean ,dry ,high quality cotton terry cloth or microfiber towel by hand.

### USAGE TIPS

- Never run the polisher while the padis off the surface of the vehicle,Always start and stop machine with the pad on the work surface (Fig,5)
- Use light to moderate pressure on machine when applying product.
- Polisher works best on speed settings Between 3-5.
- Apply product sparingly directly to the pad in an " X " Pattern(Fig.6).
- Work on completely cool surface and in shade .
- When using a cleaner or polish ,apply to one panel at a time and remove the product the product -do not allow to dry .
- When applying a wax/paint protection , apply to entire car,let product dry to a haze ,then remove .
- Mark each pad to avoid mixing products to previously used pads .

### CLEANING THE PAD

Hold machine so that the pad is facing up, While applying light pressure using your index and middle finger inside a clean towel (Fig.7), turn machine on to clean product out of the pad ,The pad should be cleaned at the end of the job while pad is still moist with product ,For best results clean pad prior to storing ,Also ,clean pad again at the start of the next usage while pad is still dry.

Fig.5



Fig.6

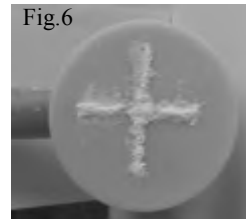
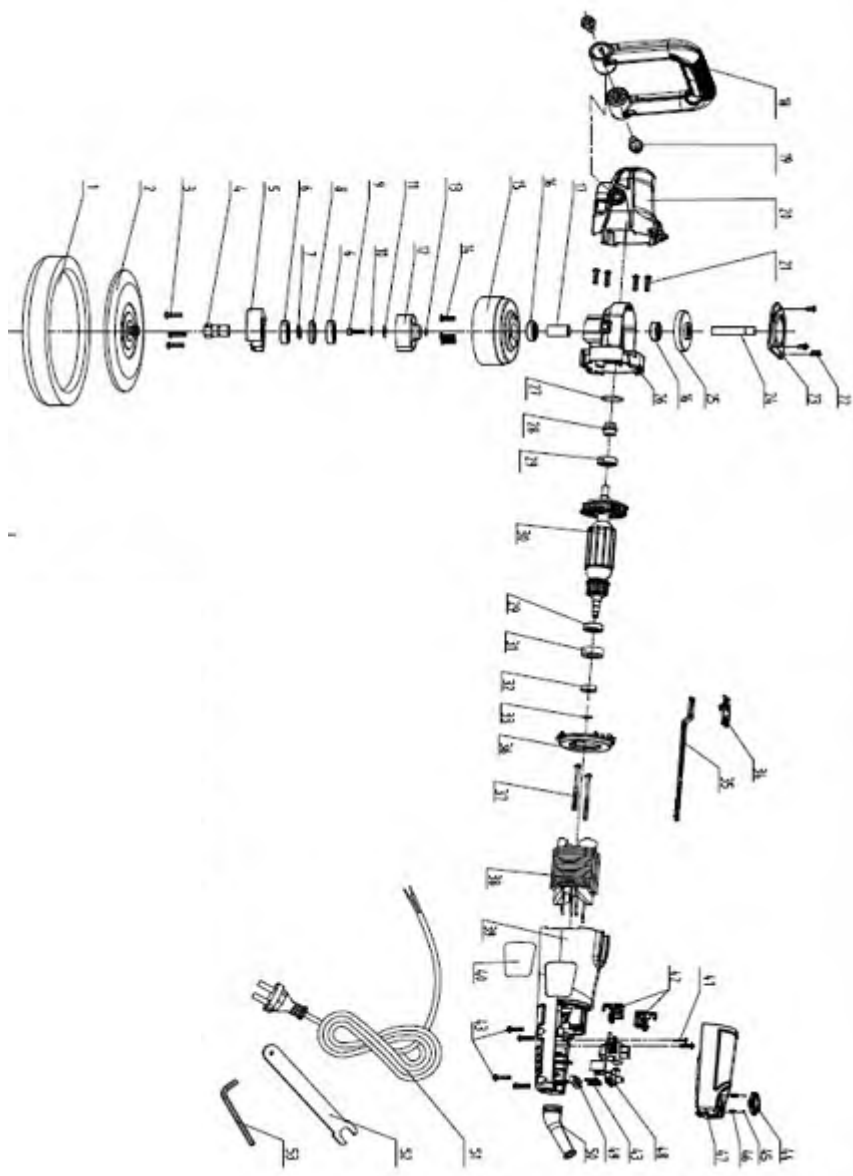



Fig.7





NO	QTY	DESCRIPTION	NO	QTY	DESCRIPTION
1	1	Sponge polishing wheel	28	1	small gear
2	1	Polishing foam pad	29	2	bearing
3	3	screw	30	1	rotator/armature
4	1	output axis	31	1	bearing cover
5	1	lower eccentric block	32	1	Magnetic-ring component
6	1	ball bearing	33	1	Stop-ring,retaining ring
7	1	Stop-ring,retaining ring	34	1	switch pushing-plate
8	1	bearing spacer	35	1	switch rod
9	1	screw	36	1	windshield ring
10	1	washer	37	2	screw
11	1	eccentric washer	38	1	stator
12	1	upper eccentric block	39	1	cylinder
13	1	spacer	40	1	trademark label
14	3	screw	41	2	screw
15	1	protective cover	42	2	carbon brush component
16	1	ball bearing	43	4	screw
17	1	axle sleeve	44	1	speed-control dial
18	1	auxiliary handle	45	2	copper ball
19	2	screw	46	2	spring
20	1	hood	47	1	tail- hood
21	4	screw	48	2	speed-control circuit board assembly
22	3	screw	49	1	pressing cord block
23	1	dust cover	50	1	cord sleeve
24	1	gear box	51	1	power cord
25	1	big gear	52	1	open spanner
26	1	gear box	53	1	inner hexagon spanner
27	1	o-rings			

 **WARNING** : Electrical repairs should only be attempted by trained repairmen. contact your local customer service office.

# Lutool®

